



Bobcat[®]

One Tough Animal.

BOBCAT COMPACT TRACTORS FIELD KITS OVERVIEW

🌐 EMEA



BOBCAT COMPACT TRACTORS FIELD KITS OVERVIEW

Explore the true versatility of your Bobcat Compact Tractor with field kits. Designed for your Bobcat equipment, you have the peace of mind that the options will be the best fit to optimize efficiency, comfort, adding new functionality for greater productivity.



TIP

COMPATIBILITY

To ensure perfect compatibility with your machine model, please use our **Online Parts Catalogue** with the serial number of your machine. All field kits are available for ordering in the EMEA Parts Portal.



COMFORT KITS

Enhance the comfort while driving your compact tractor with this selection.

► Rear Wiper Kit

Kit to install wiper on the rear window of the cabin.

P/N: 7497800



► Linked RPM Kit

Kit allows the control of the hydrostatic pump flow & engine RPM by the throttle pedal simultaneously, adding ease of operation.

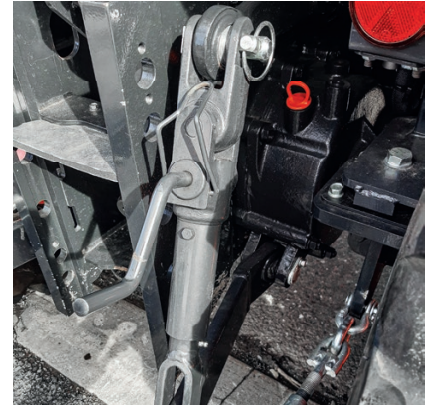
P/N: 7490909



► Rod Lift Bevel Gear Kit

Rod lift equipped with a lever to allow on the spot to setup the attachment angle, adding ease of operation compared with the the standard rod lift.

P/N: 7378645



► Cabin Mirror Kit

Cabin interior mirror kit.

P/N: 7497804



COMFORT KITS COMPATIBILITY

KIT NAME	PART NUMBER	ROPS models						Cabin models		
		CT1025LA	CT2025LA	CT2035KA	CT2035KE	CT2040KA	CT2040KE	CT2525LA	CT2535KA	CT2540KA
Rear Wiper Kit	7497800							●	●	●
Linked RPM Kit	7490909	●								
Rod Lift Bevel Gear Kit	7378645		●	●	●	●	●	●	●	●
Mirror Cabin Kit	7497804							●	●	●



LIGHTING KITS

Working safely early in the morning, in twilight or darkness requires quality lighting. Our Beacon kit will make you visible by others and you will get additional light output thanks to the Light kits.

▶ Light Front Work Kit

Front Light kit to be installed on the left and right side rear fenders, for additional lighting output.

P/N: 7497815



▶ Light Rear Work Kit

Rear light kit, including necessary hardware for installation.

P/N: 7371412, 7378614, 7384223



▶ Radio Assy

Bluetooth radio player kit, including radio, harness hardware and installation instructions.

P/N: 7457792



▶ Canopy Beacon Kit

Beacon kit with necessary hardware.

P/N: 7499289, 7502014



▶ Cabin Beacon Kit

Beacon kit for cabin models, with necessary hardware for installation.

P/N: 7502012



LIGHTING KITS COMPATIBILITY												
KIT NAME	PART NUMBER	ROPS models								Cabin models		
		CT1025LA	CT2025LA	CT2035KA	CT2035KE	CT2040KA	CT2040KE	CT4050	CT4058	CT2525LA	CT2535KA	CT2540KA
Light Front Work Kit	7497815							●	●			
Light Rear Work Kit	7371412	●										
	7378614		●	●	●	●	●					
	7384223							●	●			
Radio Assy	7457792									●	●	●
Canopy Beacon Kit	7502014	●										
	7502014		●	●	●	●	●					
Cabin Beacon Kit	7502012									●	●	●



HYDRAULIC KITS

A comprehensive selection of hydraulic options is available to expand the versatility of your Bobcat Compact Tractor, allowing the use of a broad variety of attachments.

▶ Detent Kit

Detent kit allows to lock the hydraulics with a lever to get a constant flow, especially useful for attachments requiring rotating operations powered by the hydraulic system (gutter brush / multipurpose sweeper). Typically used in conjunction with the Tube drain kit (7491324, 7497806).

P/N: 7384222, 7384208



▶ Tube Drain Kit

Allow a direct connection of the hydraulic flow back to the tank, to reduce backpressure, reduce oil temperature, hence increasing performance of attachments. Typically used in conjunction with Detent kit.

P/N: 7491324, 7497806



▶ Third Function Front Loader Kit

The third function kit adds an extra line for hydraulic flow, in front of the tractor, for specific attachments (Utility fork & grapple + Snow blade) requiring a third hydraulic function. Kit includes new joystick to allow to lift and tilt + adding the 3rd function.

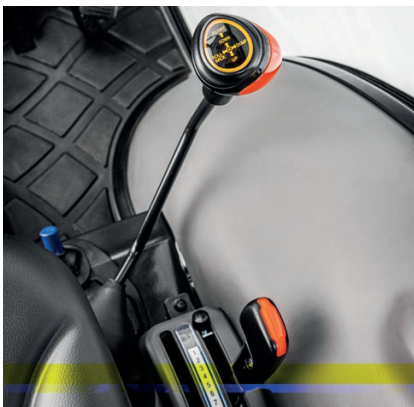
P/N: 7499939, 7499940, 7499941



Valve Joystick Kit

For mechanical transmission models, the valve joystick kit consists in a joystick to control front attachments (for front lift or front end loader, for instance).

P/N: 7502012



▶ Front Hydraulic Port

Bringing rear auxiliary hydraulic to the front of the tractor; kit including hoses, hardware.

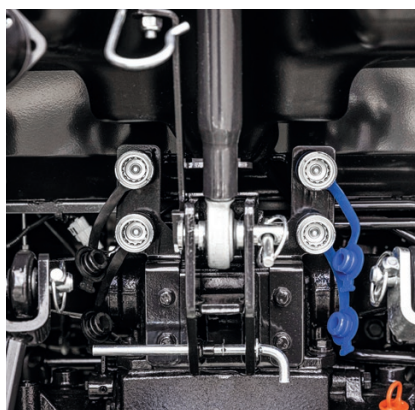
P/N: 7490900



▶ Valve Double Acting Kit

Valve double-acting kit is bringing two separate hydraulic lines to the rear of the tractor, to allow the use of attachments, requiring one hydraulic line to be pressurized, while the second one is a drain line (for a rotating movement).

P/N: 7491326



HYDRAULIC KITS COMPATIBILITY

KIT NAME	PART NUMBER	ROPS models								Cabin models			
		CT1025LA	CT2025LA	CT2035KA	CT2035KE	CT2040KA	CT2040KE	CT4050	CT4058	CT2525LA	CT2535KA	CT2540KA	
Front Hydraulic Port Kit	7490900	●											
Detent Kit	7384208		●	●	●	●	●						
	7384222							●	●				
Tube Drain Kit	7491324		●	●	●	●	●			●	●	●	
	7497806							●	●				
Third Function Front Loader Kit	7499939	●											
	7499940		●	●	●	●	●			●	●	●	
	7499941							●	●				
Valve Joystick Kit	7502012		Std	Std	●	Std	●			Std	Std	Std	
Valve Double Acting Kit	7491326		●	●	●	●	●						

Std = Factory-installed option

PROTECTION KITS

Protect your tractor with front guard and durable front fenders, useful option against mud build up and rocks during tough climate conditions.

► Front Guard Kit

Front Guard recommended to be installed in conjunction of the Front End-Loader attachment, to protect front of the tractor's engine.

P/N: 7499220, 7499221, 7499222



► Front Fender Kit

Durable front fenders, sold with all necessary hardware.

P/N: 7491322, 7499280



► Hydraulic Filter Guard Kit

Kit consists in guard with hardware, protecting the hydraulic filter from damage from the ground.

P/N: 7370398

PROTECTION KITS COMPATIBILITY

KIT NAME	PART NUMBER	ROPS models								Cabin models			
		CT1025LA	CT2025LA	CT2035KA	CT2035KE	CT2040KA	CT2040KE	CT4050	CT4058	CT2525LA	CT2535KA	CT2540KA	
Front Guard Kit	7499220	●											
	7499221		●	●	●	●	●			●	●	●	
	7499222							●	●				
Front Fender Kit	7491322		●	●	●	●	●			●	●	●	
	7499280							●	●				
Hydraulic Filter Guard Kit	7370398	●											



WEIGHT KITS

Front weights are available for your compact tractor, easy to install with bracket and hardware, ensuring the perfect fit.

► Front Weights Kit 2×30 kg (60 kg)

Consists in 2×30 kg counterweight to place at the front of the tractor.

P/N: 7497711



► Front Weights Kit 6×26 kg (156 kg)

Consists in 6×26 kg counterweight to place at the front of the tractor.

P/N: 7497719



WEIGHT KITS COMPATIBILITY

KIT NAME	PART NUMBER	ROPS models								Cabin models			
		CT1025LA	CT2025LA	CT2035KA	CT2035KE	CT2040KA	CT2040KE	CT4050	CT4058	CT2525LA	CT2535KA	CT2540KA	
Front Weights Kit 2×30 kg (60 kg)	7497711	●											
Front Weights Kit 6×26 kg (156 kg)	7497719		●	●	●	●	●			●	●	●	



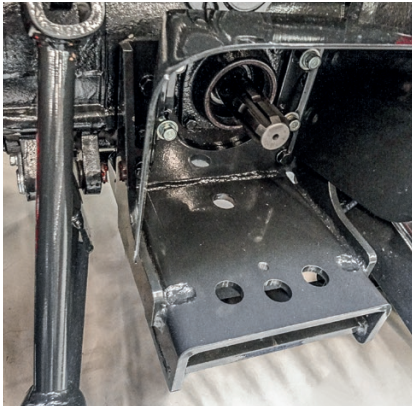
SPECIAL APPLICATION KITS

Allow fine tuning options to ensure perfect compatibility and driving experience with your trailer. Different options are available with swing drawbar kit, height adjustable hitch, telescope lower link and more. Your customers will appreciate the range, allowing them to work in many different applications.

► Swing Drawbar Kit

Frame swing drawbar kit, to be installed to the tractor's rear side to offer more towing tuning possibilities (help turning with haul trailers due to the swinging ability and allowing a smooth driving).

P/N: 7491355



► Height Adjustable Hitch Kit

Kit to allow an adjustable hitch height.

P/N: 7491351, 7497813



► Rear Hitch Pin Kit

Connecting rear hitch pin.

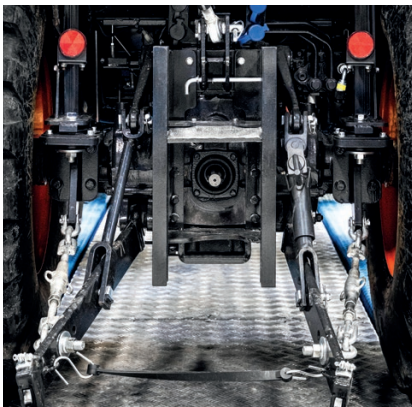
P/N: 7490905



► Telescope Lower Link Kit

Lower link with telescopic functionality to allow adjustability of the rear attachment (allowing more reach).

P/N: 7491335



► Lower Link Quick Type Kit

Lower link quick type, allowing quick release of attachments on the lower link (kit including swivel balls).

P/N: 7491344, 7497811



MID PTO Kit

Bring power to your compact tractor with this Mid PTO kit (Power Take Off kit). for mechanical transmissions models, required for mid-located attachments (mid-mower).

P/N: 7491353



► Cabin Number Plate Kit

Cabin number plate kit, located at the top of the cabin roof, with front license plate bracket and rear license plate bracket with lights.

P/N: 7497802



SPECIAL APPLICATION KITS COMPATIBILITY

KIT NAME	PART NUMBER	ROPS models								Cabin models		
		CT1025LA	CT2025LA	CT2035KA	CT2035KE	CT2040KA	CT2040KE	CT4050	CT4058	CT2525LA	CT2535KA	CT2540KA
Swing Drawbar Kit	7491355		●	●	●	●	●			●	●	●
Height Adjustable Hitch Kit	7491351		●	●	●	●	●			●	●	●
	7497813							●	●			
Rear Hitch Pin Kit	7490905	●										
Telescope Lower Link Kit	7491335		●	Std	●	Std	●			Std	Std	Std
Lower Link Quick Type Kit	7491344		●	●	●	●	●			●	●	●
	7497811							●	●			
MID PTO Kit	7491353		Std	Std	●	Std	●			Std	Std	Std
Cabin Number Plate Kit	7497802									●	●	●

Std = Factory-installed option



Your Bobcat Dealer:



Bobcat®

If you're looking for more information, visit

WWW.BOBCAT.COM 

© 2023 BOBCAT

Bobcat is a Doosan Company.

Doosan is a global leader in construction equipment, power & water solutions, engines, and engineering, proudly serving customers and communities for more than a century. Bobcat and the Bobcat logo are registered trademarks of Bobcat Company in the United States and various other countries.

© 2023 Bobcat Company. All Rights Reserved.

Doosan Bobcat EMEA, U Kodelky 1810, 263 12 Dobříš, Czech Republic

*Financing options may vary by country and dealer. Always ask your dealer about currently available financing options. Terms and conditions may apply.

