

[Hjem](#) ▶ [Utstyr](#) ▶ [Slåmaskiner](#) ▶ [ZT3500 Zero-Turn klipper](#)



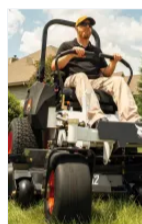
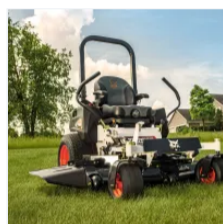
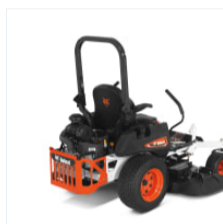
ZT3500 Zero-Turn klipper

ZT3500 er designet for store jobber og klipping av større områder, og er bygget med tanke på produktivitet, førerkomfort og enkelt vedlikehold. Med en stiv stålramme, 23-tommers drivdekk, overlegen hydrostatisk girkasse og et sete med høy rygg, fullmekanisk fjæring, kan du få jobben gjort raskere og med mindre tretthet.

[Etterspør et sitat](#)

[Planlegg en demo](#)

[Finn en forhandler](#)



ZT3500 spesifikasjoner

	ZT3500 - 48"	ZT3500 - 52"	ZT3500 - 61"
Key Specifications			
Engine Power	17.9 kW	17.9 kW	17.9 kW
Cutting Deck Width	1219 mm	1320 mm	1549 mm
Ground Speed	16 km/h	16 km/h	16 km/h
Drive Wheel Size	13 x 6.5-6	13 x 6.5-6	13 x 6.5-6
Engine			
Model	Kaw FT730V	Kaw FT730V	Kaw FT730V
Engine power	17.90 kW	17.90 kW	17.90 kW
Displacement	726.00 cm ³	726.00 cm ³	726.00 cm ³
Fuel Capacity	29.50 L	29.50 L	29.50 L
Air Filter	Dual-Stage Canister	Dual-Stage Canister	Dual-Stage Canister
Electrical			
Charging System	15.00 A	15.00 A	15.00 A
Clutch	556.00 N	556.00 N	556.00 N
Deck			

Mower Deck	TufDeck Pro Cutting System	TufDeck Pro Cutting System	TufDeck Pro Cutting System
Width	1219.00 mm	1320.00 mm	1549.00 mm
Adjustable Anti-Scalp Rollers	3.0	3.0	7.0
Cutting Height	38.0-124.0 mm	38.0-124.0 mm	38.0-124.0 mm
Blade Tip Speed	14483 fpm @ 3550 Engine rpm	16043 fpm @ 3550 Engine rpm	16816 fpm @ 3550 Engine rpm
Discharge Chute	Flexible Molded Polymer	Flexible Molded Polymer	Flexible Molded Polymer
Frame			
Front and Rear	1.5- x 2.5-inch Steel Tubing; Welded Steel Reinforced Frame	1.5- x 2.5-inch Steel Tubing; Welded Steel Reinforced Frame	1.5- x 2.5-inch Steel Tubing; Welded Steel Reinforced Frame
Machine Length	1930.00 mm	1930.00 mm	2006.00 mm
Machine Weight	350.00 kg	357.00 kg	377.00 kg
Transmission			
Type	HG ZT-3400 Hydrostatic Transaxles	HG ZT-3400 Hydrostatic Transaxles	HG ZT-3400 Hydrostatic Transaxles
Pump Displacement	12.00 cm ³	12.00 cm ³	12.00 cm ³
Oil Capacity	4.00 L	4.00 L	4.00 L
Forward Speed	16.00 km/h	16.00 km/h	16.00 km/h
Reverse Speed	5.60 km/h	5.60 km/h	5.60 km/h
Wheels			
Drive Wheel Size	23 x 10.5-12	23 x 10.5-12	23 x 10.5-12
Front Caster Wheel Size	13 x 6.5-6	13 x 6.5-6	13 x 6.5-6
Caster Arm Attachment	Welded to Frame	Welded to Frame	Welded to Frame
Seat			
Description	High Back, Full Mechanical Suspension Seat	High-Back, EVC and Spring Suspension Seat	High Back, Full Mechanical Suspension Seat
Fore-Aft Adjustment	Seat Slide Lever	Seat Slide Lever	Seat Slide Lever
Dimensions			
Height (ROP's Up)	1733.00 mm	1733.00 mm	1733.00 mm
Height (ROP's Down)	1190.00 mm	1190.00 mm	1190.00 mm
Overall Length	1930.00 mm	1930.00 mm	1930.00 mm
Overall Width (Chute Up)	1241.00 mm	1381.00 mm	1600.00 mm
Overall Width (Chute Down)	1575.00 mm	1734.00 mm	1949.00 mm

Cutting Height	38 - 124 mm	38 - 124 mm	38 - 124 mm
Wheelbase	1220.00 mm	1220.00 mm	1220.00 mm
Cutting Width	1220.00 mm	1321.00 mm	1550.00 mm
Blade Length	413.00 mm	457.00 mm	533.00 mm

ZT3500 funksjoner

[Utvid alle](#) ▾

Opptreden 4 ▾

Komfort 1 ▾

Bygget for dine behov 1 ▾

Servicevennlighet 1 ▾

Varighet 1 ▾

Lignende maskiner



WB700 Zero-Turn Walk-Behind klipper

Walk-behind klipper med høy stabilitet i ujevnt terreng, kraftig hydraulisk drift og en velprøvd motor.

[Lære mer >](#)



ZT3000 Zero-Turn klipper

Ride-on, null-sving klipper med en kraftig motor, stor drivstoffkapasitet og en robust stålørssramme.

[Lære mer >](#)



ZS4000 Zero-Turn Stand-On klipper

Stående, kompakt nullsvingklipper med enestående stabilitet, smidighet, høy kjørehastighet og høy bakkeklaring.

[Lære mer >](#)