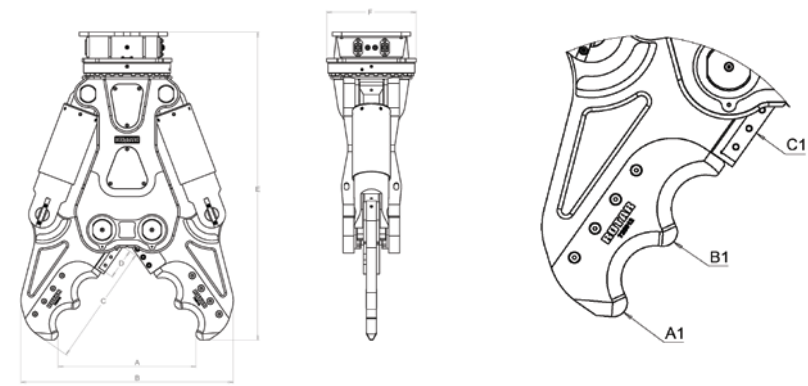


# Specifications



Ingenious, reliable, service-friendly and maximal productivity.  
That is the power of Rotar!

Type RCC	25
Information	
Machine class (t)	24-35
Weight (kg)*	2850
Closing force at position A1 (t)	117
Closing force at position B1 (t)	171
Closing force at position C1 (t)	425
Dimensions	
Dimension A (mm)	1115
Dimension B (mm)	1710
Dimension C (mm)	960
Dimension D (mm)	250
Dimension E (mm)	2474
Dimension F (mm)	720
Attachment	
Rotar Hole-pattern	140 - 150
Hydraulic	
Max. operating pressure cylinder (bar)	350
Oil volume cylinder (L/min)	200 - 250
Max. operating pressure motor (bar)	170
Oil volume motor (L/min)	40

\* Weight exclusive adapterplate with bracket  
\*\* Figures given for cycle times and cutting forces are indications only. External factors such as excavator setting, hydraulic infrastructure, quickcouplers and fittings may influence performance.  
\*\*\* Technical specifications are subject to change without prior notice



## RCC-Series

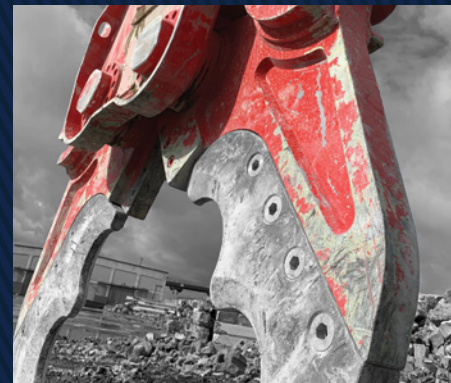




# RCC

## Rotar RCC Concrete Cutter

Extreme powerful heavy industrial concrete cutter. Despite his enormous power, the Rotar Concrete Cutter has short cycle times. With this unique combination, the RCC is a real game changer!



### Replaceable cutting teeth

The RCC is fitted with replaceable cutting teeth. Easy to maintain, easy to replace. An unique feature for these tools. This means less downtime and no welding on the basic construction. The wear-resistant casted cutting teeth offer full protection of the cutting jaws.

### Powered by RAMPLIFIER®.

The RCC is equipped with two hydraulic cylinders with an integrated RAMPLIFIER®. Once the RCC is facing heavy resistance, the RAMPLIFIER® is activated and doubles the pressure up to 700 bar in a split of a second. This new RAMPLIFIER® technology is a Rotar in-house designed technology.



### Construction & hydraulics

The RCC is constructed from high-grade performance steel. The large diameter of hoses, bores, and pipes reduces the back pressure in the hydraulic system and contributes to the extraordinary features of this RCC. The long bearing pivot points support combined loads from all directions.

GET THE  
RED CRUSH!