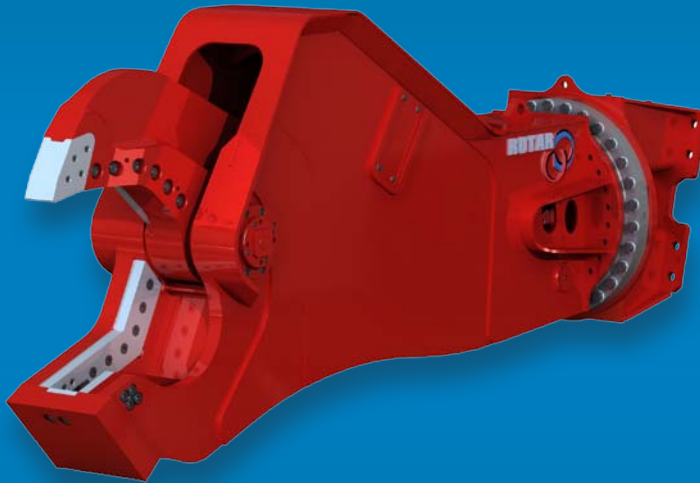


## ▶ Rotar Scrap Shear

A new generation scrap shears who easily deals with the hardest circumstances on industrial scrap yards.



A powerful cylinder in combination with the integrated speed-valve guaranties an excellent cutting force. Well balanced hydraulics together with a heavy duty construction made of wear resistance steal, turns into a valuable piece of equipment with great performances.

Some applications are: Scrap yards, demolition, recycling, shipwrecking.

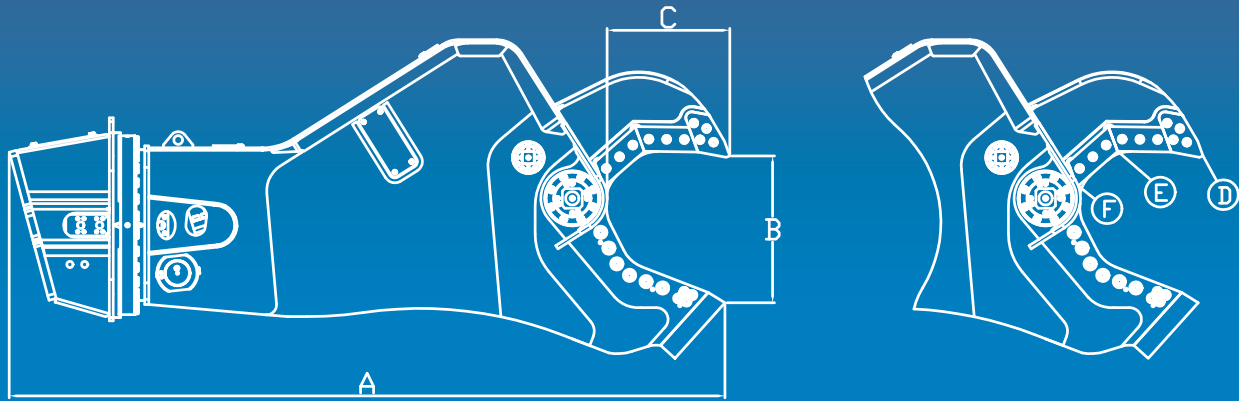
## ▶ Features

- Extreme cutting force (power)
- Fast cycle times
- 360° rotation
- Indexable cutting edges
- Pocket nose-blades fully protected
- Bolt-on adapter
- Service friendly

## Scrap Shear

- ▶ Rotar Cleaner
- ▶ Sorting/Demolition Grab
- ▶ Tyne Re-handling Grab
- ▶ Segregator Bucket
- ▶ Crusher Bucket
- ▶ Pulverizer
- ▶ Combi Shear
- ▶ Steel Shear





Type RSS	20	30	40	50	100
<b>Information</b>					
EXCAVATOR BOOM MOUNTED (TON)	***	20	25	30	45
EXCAVATOR STICK MOUNTED (TON)	***	32	38	50	65
WEIGHT (KG)*	***	3590	4440	6350	8300
HOLEPATTERN MOUNTING BRACKET	***	BR3890	BR3890	BR3890	BR3890
<b>Dimensions</b>					
DIMENSION A (MM)	***	3275	3635	3980	4835
DIMENSION B (MM)	***	607	750	782	947
DIMENSION C (MM)	***	544	625	701	903
<b>Cutting force</b>					
TIP** (D) (TON)	***	153	165	197	237
APEX** (E) (TON)	***	292	312	383	458
THROAT** (F) (TON)	***	654	797	937	1312
<b>Open / Close</b>					
PRESSURE MAX. (BAR)	***	350	350	350	350
FLOW MAX. (LPM)	***	450	450	450	750
<b>Rotation</b>					
PRESSURE MAX (BAR)	***	170	170	170	170
FLOW MAX. (LPM)	***	50	50	50	50

\* Weight exclusive adapterplate with bracket  
 \*\* Cuttingforce measured at 350 bar  
 \*\*\* Dimensions under construction

specifications may change without prior notice

*Your Attachment Supplier*